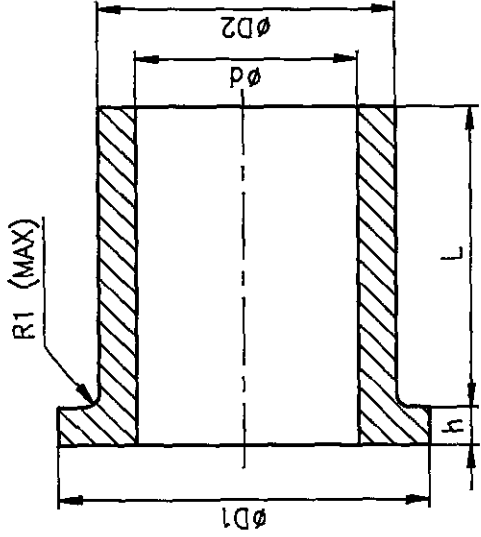


FOR TOLERANCES OF UNTOLERANCED DIMENSIONS ALL DIMENSIONS ARE IN MILLIMETRES.
DURING MANUFACTURE REFER RELEVANT QCP/QP

REV	DATE	ALTERED
		CHD & APPD

CAUTION: The information on this document is the property of BHARAT HEAVY ELECTRICALS LTD. It must not be used directly or indirectly in any way detrimental to the interest of the company.



VAR NO	phi d	phi D1	phi D2	L	h	MATL CODE	WT/100 KGS
01	8 +0.022 0	19 ± 0.013	11 +0.029 +0.018	13 ± 0.013	1.5 ± 0.050	963531500000	1.000
02	20 +0.020 -0.030	28 ± 0.060	25 +0.062 -0.041	19 ± 0.100	2.5 +0.300 0	963531480000	5.000

NOTES:

01. MATERIAL

VAR NO 01 PTFE FILLED WITH GLASS.

VAR NO 02 SINTERED BRONZE CONFORMING TO IS:3980XX GRADE1 CLASS A

OIL IMPREGNATED.

02. THE BUSHING SHALL BE UNIFORM IN COMPOSITION AND FREE FROM DEFECTS

WHICH WOULD AFFECT THEIR SERVICEABILITY.

NO OFF	DESCRIPTION	MATL CODE	MATL SPECN	HEAT TREATMENT	SCRAP SORT	NET WT (KG)	GROSS WT (KG)	DRAWING No	ITEM No
BHARAT HEAVY ELECTRICALS LTD., UNIT: HIGH PRESSURE BOILER PLANT. TRUCHIRAPALLI 620014.									
DEPT SB	SCALE	WEIGHT (KG)	REFERENCE INFORMATION						
CODE 330	NTS	-	TSB 028						
TITLE		CARD CODE	DRAWING NO.	REV					
FL, SINTERED BUSH.		U 01	4-20-001-02393	00					

Size A4